



SAN BERNARDINO
MOUNTAINS
LAND TRUST

Dedicated to the acquisition of forest open space and wildlife habitat on private lands within the San Bernardino National Forest in order to ensure lasting public benefit of the natural mountain environment.

NEWSLETTER

Volume 10, No.1

Summer 2007

WILDHORSE CREEK

Newest Addition to Forest

Wildhorse Creek, a pristine wildland parcel between Big Bear Lake and the San Geronio Wilderness, is the newest addition to the San Bernardino National Forest.

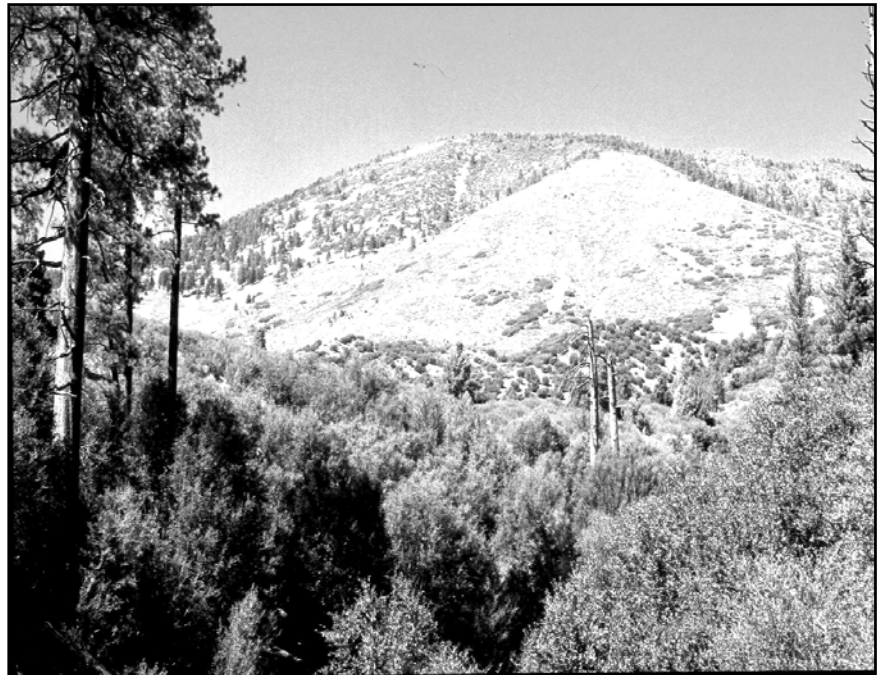
This scenic 273-acre parcel includes magnificent riparian habitat and a popular equestrian and hiking trail, which was previously off-limits to public use while in private ownership. Long considered a vital missing piece of the National Forest, its recent protection is cause for celebration.

Wildhorse Creek was first identified over five years ago by the San Bernardino Mountains Land Trust (SBMLT) as a critical conservation acquisition in the Save the Saints campaign. SBMLT research and detailed property profiles with maps and photos were given to the Trust for Public Land, which successfully arranged the transaction.

For anyone who'd enjoy visiting this impressive part of the forest, the Land Trust has scheduled a hike on the old trail in September. (See *Hikes* on page 5).



Photo by Ron Whipple



View of upper Whitehorse Creek riparian area, the newest addition to the San Bernardino National Forest, with Sugarloaf Mountain in the background. Wildhorse Creek has been an acquisition priority of the Save the Saints Campaign for many years.

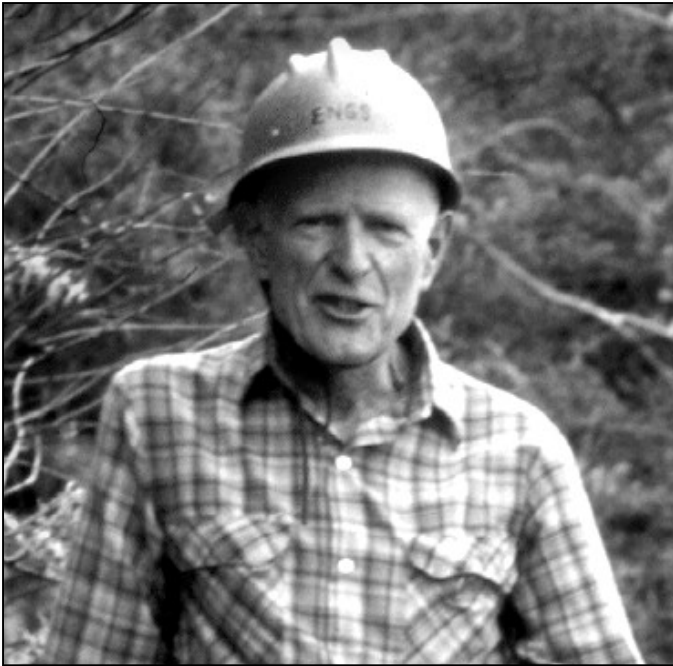
Protecting Mill Creek Habitat

In December, the Land Trust helped create a special Conservation Easement to protect the riparian habitat at the confluence of Mill Creek and Mountain Home Creek, which is two miles upstream from the Mill Creek Ranger Station.

Mill Creek is a primary watershed stream of the San Geronio Mountain area, flowing through the community of Forest Falls then joined downstream by its tributary Mountain Home Creek, which flows out of Angelus Oaks to the north.

This special habitat area was placed under conservation stewardship of SBMLT at the request of the Forest Service and local cabin owners as part of a small land exchange. The land transfer has enabled the Forest Service to protect additional riparian habitat downstream.

The project represents the Land Trust's first conservation easement, a form of legal agreement that limits the development rights on designated property and creates habitat protection conditions.



Bill Engs, pictured at a Land Trust trail project, was elected President of the Board for 2007. Engs is a former Cal-Sate professor of Organizational Management with a Ph.D. in the field.

THE PEOPLE OF SBMLT

At the start of 2007, there was a changing of SBMLT Officers as former vice-president, Bill Engs, assumed the role of president and Arnie Bean stepped in as vice-president. Secretary and Treasurer positions continued to be held by Sandi Huckaby and Valerie Wilson.

Following a year of preparation, the Land Trust officially created two part-time staff positions in mid-May. Peter Jorris, who previously served two years as president of the board, has assumed the role of Executive Director for the Land Trust, while Kevin Kellems has been hired as an all around Projects Manager, specializing in land acquisition. The creation of staff positions has been made possible in part by a grant from

SBMLT 2007 Officers and Staff:

Bill Engs, President
Arnie Bean, Vice President
Sandi Huckaby, Secretary
Valerie Wilson, Treasurer
Peter Jorris, Executive Director
Mary Ann Dickinson, Director
Walter Ford, Director
Bob Nida, Director
Kevin Kellems, Projects Manager

The Wildlands Conservancy. The primary activities of Land Trust staff will be managing the day-to-day operations of the organization and administering the land acquisition program that was greatly expanded with the recent creation of a special Revolving Land Acquisition Fund.

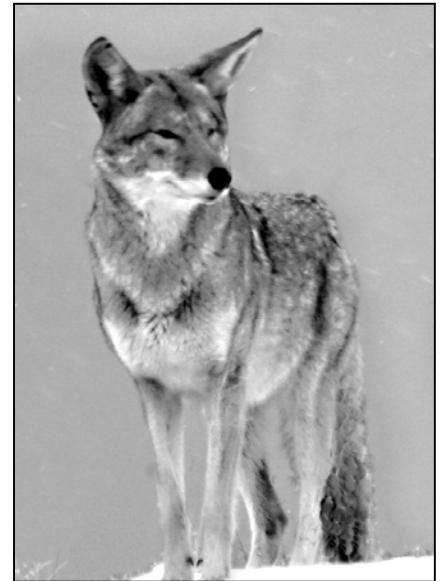
Board member Bob Nida has been helping to develop strategic plans for SBMLT in the areas of funding, board development, outreach, and governance. He has served as a director of numerous non-profit organizations, providing professional council in their formation, board recruitment, and fund raising activities. He recently served as President of the Pacific Crest Trail Association and is Vice-Chair of Community Partners, an umbrella organization for 150 start-up nonprofits. He has been a part-time resident of Lake Arrowhead for 20 years.

AWARDS PRESENTED IN THE LAND TRUST'S 2007 PHOTO CONTEST

Each year the Land Trust Photo Contest produces outstanding examples of unique beauty found in our inspirational local National Forest. Out of all the entries submitted, 14 premier photos are highlighted in the 2008 SBMLT Calendar.

The Calendar provides a visually impressive overview of our forest and a special reminder of the vital work the Land Trust performs in protecting this forest treasure.

This year first place went to Sharon Beth (see winning photo on page six) and second place to John Hummel. Other winning photographers included Erv Nichols (last year's winner), Joseph Francuz, Terry Kitain, Sandra Huckaby, Tom Greer, and Rob Whipple. All will be featured in the new calendar. Each year first place is awarded \$500 and second place \$250, with other winning photos awarded \$25 each.



Advance orders for the 2008 Calendar can be made by sending in the form on page 4.

(Coyote by Sharon Beth from the 2007 Calendar)

MOUNTAIN FIRE DANGER

Open Space vs. More Development

This year is the driest on record for our local forest, which means the fire danger is greatly elevated. Studies show global climate change is increasing the frequency and intensity of wildfires in western forests.

Forestry experts point out that the San Bernardino Mountains are subject to wild fires every year. Fire is part of the natural ecological cycle of the forest.

Allowing too many structures inside the forest has led to the most hazardous wildfire conditions in the nation. In 2003 over 90,000 acres burned in our forest and an unprecedented 80,000 people were evacuated

Despite this fact, there is continued pressure to build even more houses inside the forest on remaining private lands.

The most logical solution would be to purchase the largest of the private lands for conservation instead of more development.



A mountain structure goes up in flames during the 2003 Old Fire

Conservation Reduces Risk

Defense of structures in the wildland/urban intermix is the most dangerous fire fighting condition of all. Adding more buildings compounds the difficulty, cost and risk of fire safety. The higher the ratio of structures to wildland, the greater is the problem and risk. The death of five firefighters in the National Forest last year has led to a reevaluation of the overall firefighting policies in areas like this.

The San Bernardino National Forest already has the highest percentage of development within its boundary of any National Forest. Adding more houses continues to increase the problem.

Nowhere else is land conservation more vital to public safety than right here in our local mountains. Every parcel protected for conservation reduces the

number of structures that would be built and lessens the future risk.

For this important reason it is vital to save as much of the forest open space as possible.

The role of the Land Trust for Forest protection becomes even more significant, when this fact is taken into consideration.

PROGRESS IN FOREST PROTECTION

As reported on page one, Wildhorse Creek just achieved conservation protection. This follows closely upon other successful *Save the Saints* projects in Grass Valley Creek and the Yucaipa Ridge area. The San Bernardino Mountains Land Trust was instrumental in transferring 1,000 acres of Yucaipa Ridge to the Forest Service in January 2007 following the transfer of 150 acres in the Grass Valley Creek area of Lake Arrowhead in February 2006.

Continued progress in patching and replacing missing pieces in the National Forest is essential for the future integrity of our magnificent mountains and forestlands.

Save the Saints Vision

The Save the Saints vision focuses on three mountain ranges that encircle the greater Los Angeles Basin. These include the *San Gabriel* Mountains, the *San Bernardino* Mountains and the *Santa Ana* Mountains. These mountain ranges as well as famous peaks (like *San Antonio*, *San Gorgonio* and *San Jacinto*) all are known by Spanish names for saints.

These mountains are the most heavily used public lands in the entire United States, because they are surrounded by the largest population in the country.

San Bernardino National Forest

The San Bernardino National Forest already has the highest percentage of urban development inside its boundary of any National Forest, and it is still vulnerable to even greater development because of the many missing pieces.

The San Bernardino Mountains Land Trust along with various partners is working especially hard to keep this exceptional southern California forest intact. Your generous support has been essential to the continued progress. Thank you to all our members.

Your Membership Is Essential To Success!

The Land Trust is a 501 (c) 3 non-profit organization. All contributions are tax deductible

My annual contribution is as follows:

_____ General	(\$25)	Name: _____
_____ Family	(\$50)	Address: _____
_____ Mountain Sponsor	(\$100)	City / State / Zip _____
_____ Forest Protector	(\$500)	Phone: _____
_____ Other Donation (\$ _____)		E-mail: _____

Join this vital effort (or re-new your support) with a generous contribution today.

San Bernardino Mountains Land Trust PO Box 490 Lake Arrowhead, CA 92352



Humboldt Lily by Sandi Huckaby from the 2008 SBMLT Calendar

SBMLT POWER POINT SHOW

Sharing the importance of the Land Trust's purpose is an on-going challenge, since many people are not familiar with the concept of a land trust, or aware of the serious threats facing our National Forest due to the number of missing pieces inside its boundaries which are vulnerable to development.

The Land Trust has updated its scenic, informative slide show to a new Power Point presentation. The program was recently presented to the Lake Arrowhead American Legion and the Mountain Group of the Sierra Club. Feedback was very positive.

If you are interested in scheduling a 20-45 minute program about the Land Trust, you are welcome to call our Secretary, Sandi Huckaby (909-867-7105) or Projects Manager, Kevin Kellems (909-867-9159) to schedule a presentation.

Enjoy the beauty of our mountains all year round with the
San Bernardino Mountains Land Trust **2008** full-color 14 month **CALENDAR**

ADVANCE ORDER FORM (Calendars will be ready in October)

Name _____

Address _____

City / State / Zip _____

Mail form with \$10.00 for each calendar + \$1.50 shipping to:
SBMLT, PO Box 490, Lake Arrowhead, Ca 92352

THE MOUNTAINTHRIFT SHOPPE

The Land Trust helps to operate the Mountain Thrift Shoppe in Blue Jay Village, and the proceeds provide a valuable source of funding.

The Land Trust's team of thrift store volunteers includes Bill Engs, Vivian Allard, Sandy Ellis, Georgina Coats, Lori Semeniuk and Peter Jorris. New volunteers are always greatly welcome.

During the past 12 months, star volunteer, Vivian Allard, dedicated the highest number of hours to this worthy cause.

The Thrift Shoppe is located next-door to Jensen's Market and features a variety of quality merchandise and great bargains. We encourage everyone to shop at the store as well as donate any worthwhile items.

Contact Info

If you would like to learn more or help volunteer, please call Sandi Huckaby (our Land Trust Secretary) at (909) 867-7105 or Peter Jorris at (909) 867-3536.

An average weekly shift at the Thrift Shoppe is 3 hours. Many variations are possible. The average shift produces approximately a \$1,800 contribution per year for the Land Trust, which is a tremendous help.

SBMLT GOES TO WASHINGTON DC

In March, longtime Land Trust volunteer and member of the Board of Directors, Peter Jorris, traveled to Washington DC in order to convey greater information about the important Save the Saints campaign to key elected officials.

Each year Congress allocates money to various National Forests to help purchase missing pieces within Forest boundaries. The money comes from a long-established fund called the Land & Water Conservation Fund (LWCF), funded by royalties paid by oil companies for special public leases on the outer continental shelf.

The National Forests of Southern California are the most heavily used public lands in the entire USA, also the most threatened by development and wildfires and

the most in need of LWCF help. If Congress is not adequately aware of these critical facts, the special LWCF help, which is specifically in-tended for this purpose, slips away.

Our goal is to fully communicate these vital facts to the representatives in charge of administering the much needed LWCF

appropriations. Taking the message of the Save the Saints campaign directly to the key offices in Washington DC is the best way for this information to be heard. *(Photo of Peter Jorris at the Capitol Building)*



LAND TRUST HIKES SCHEDULED Great Outdoor Opportunities

Three premier hikes have been scheduled this summer and fall by the Land Trust staff. This is an excellent opportunity for members to experience firsthand the outstanding scenic treasures of our remarkable mountains and to learn more about the unique role the Land Trust plays in protecting the National Forest.

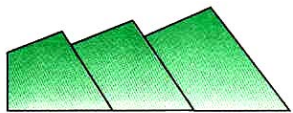
Selected destinations include the inspiring Bluff Lake area, the rare meadowland of Little Green Valley and the newly protected region of Wildhorse Creek. Each of these areas is rich in scenery, forest resources, and conservation significance.

<u>Date</u>	<u>Hike Info</u>	<u>Contact</u>
Fri. 7/27	Little Green Valley Meadow from Keller Hut Trailhead across from Snow Valley. Nature Hike	Call Sandi Huckaby at 909-867-7105 to RSVP and obtain directions.
Sat. 8/25	Moderate hike up to Castle Rock in Big Bear, then to Bluff Lake. Lunch to be catered at Bluff. \$15 fee for lunch. Limited in number Shuttle back to starting point.	Make reservation with Kevin Kellems at (909) 867-9159 Sign up early because space is limited
Sat. 9/22	Wildhorse Creek and Sugarloaf Mountain. Strenuous hike. Ten mile round trip.	Phone Kevin Kellems for details and meeting site. (909) 867-9159



Prize winning photo by Sharon Beth of spectacular cloud formations over Big Bear Lake. This picture along with other Photo Contest winners is featured in the 2008 Land Trust Calendar. See the order form on page four.

Newsletter Editor: Patrick Huckaby



**SAN BERNARDINO
MOUNTAINS
LAND TRUST**

PO Box 490
Lake Arrowhead, CA 92352