



NEWSLETTER

*Dedicated to acquisition of forest open space & wildlife habitat on private lands
in the San Bernardino National Forest to ensure lasting public benefit of the natural mountain environment.* **Fall/Winter 2010**



120-acre Twin Peaks parcel saved by SBMLT in 2002 with help from the state Dept of Fish & Game, the Wildlife Conservation Board and Assemblyman Bill Leonard

MORE SUPPORT *from* **BIG LAND TRUSTS**

Besides important land acquisitions made directly by the **SAN BERNARDINO MOUNTAINS LAND TRUST**, other conservation partners are increasingly pitching in to help buy significant parcels as well.

This is one of the positive results of momentum for vital land acquisition built up by SBMLT during the past 15 years. It creates a favorable climate for greater conservation. Support from you as SBMLT members has made this remarkable progress possible.

Teamwork

Key land protection efforts over the years have included the Wildlands Conservancy, the Trust for Public Land, the Pacific Crest Trail Association, Friends of the Desert Mountains, the American Land Conservancy and others.

The Wildlands Conservancy has recently been instrumental in protecting a critical inter-mountain wildlife linkage in the Cajon Pass. Trust for Public Land is working on a key wilderness project in the National Forest that has been a priority for 20 years.

Another basic factor of continued success has been help from elected officials like Senator Feinstein and Congressman Lewis in concert with the Forest Service and Department of Fish and Game.

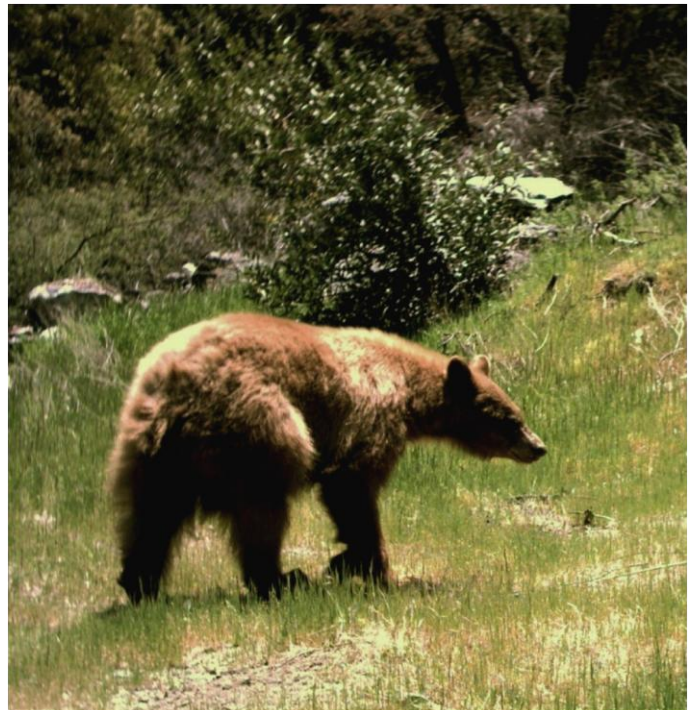
PROTECTING WILDLIFE HABITAT

A big part of the vitality of our local forest is tied to the wellbeing of the natural wildlife. The rich diversity of animals depends on unique habitats for survival. Without ample open space to hunt, forage, breed, and raise young, the native species perish.

The Land Trust continues to focus on projects in the National Forest with riparian habitat and wildlife routes, where greater protection is essential to ensure survival of our threatened wildlife.

A prime example is the Interstate 15 overpass bridge at Cleghorn Creek in the Cajon Pass. It is the principal linkage point, where large animals can transit between the San Bernardino Mountains and the San Gabriel Mountains.

Both SBMLT and the Wildlands Conservancy are working to more fully secure this major wildlife linkage, which is fundamental to the survival of large mammals in these two mountain ranges.



This local black bear lives in the wildlife-rich Yucaipa Ridge area, where over 3,000 acres have been protected for conservation. (Photo taken by TWC motion camera.)



2011 Calendar Photo

Tricia Greer

**The 2011 Mountain CALENDAR
Of the San Bernardino Mountains Land Trust**

is now available at
the Forest Service Discovery Center,
mountain bookstores, and on the website:
WWW.SBMLT.NET

**SAN BERNARDINO
MOUNTAINS LAND TRUST**

2010 Board of Directors

OFFICERS

President	Bill Engs
Vice-President	Walter Ford
Board Secretary	Arnold Bean
Treasurer	Robert Nida

DIRECTORS

Valerie Wilson	Peter Jorris
----------------	--------------

2010 STAFF

Peter Jorris, Executive Director
Kevin Kellems, Projects Manager

CALENDAR & PHOTO CONTEST

Coordinator	Ellie Lytle
Graphic Design	Tom Greer

TO CONTACT THE SAN BERNARDINO LAND TRUST

PHONE THE EXECUTIVE DIRECTOR AT
909-867-3536 OR
EMAIL: INFO@SBMLT.NET
WEBSITE: WWW.SBMLT.NET

**Help support
The San Bernardino Mountains Land Trust**

**Use this form
to mail your contribution**

Your Membership Is Essential To Success!

The Land Trust is a 501(c)(3) non-profit organization. Your contributions are tax deductible.

My contribution is:

<input type="checkbox"/> General	(\$25)
<input type="checkbox"/> Family	(\$50)
<input type="checkbox"/> Mountain Sponsor	(\$100)
<input type="checkbox"/> Forest Protector	(\$500)
<input type="checkbox"/> Other Donation	(\$ _____)

Name: _____

Address: _____

City / State / Zip _____

Phone: _____

E-mail: _____

Join this vital effort (or renew your support) with a generous contribution today.

San Bernardino Mountains Land Trust PO Box 103 Fawnskin, CA 92333 **-or-**
PO Box 490 Lake Arrowhead, CA 92352

THREE EXAMPLES of PRIORITY AREAS for LAND CONSERVATION

Threatened Habitat, Scenic Wildlands and Recreational Open Space



Cajon Ridge, overlooking the Pass, with San Gabriel Mountains in background. This site funnels into the only viable wildlife link between the two mountain ranges for large animals to travel.

The DEEP CREEK WATERSHED

Deep Creek is the premier wild trout stream of Southern California and major watershed of the western half of the San Bernardino Mountains. The north fork begins at Snow Valley and the east fork flows out of Keller Peak. Significant protection is still needed in these headwater areas between Green Valley Lake and Running Springs.

Deep Creek was the first focus of the Land Trust, when three acquisitions in the late 1990s protected over 700 acres. In addition to buying tax sale lots in the flood plain, there are 300 acres of large parcels, where future acquisitions need to be pursued. Riparian habitat and forest canopy throughout this watershed comprise some of the best wildlife and scenic assets of the entire forest.



View of the Onyx Summit area with the snow-capped San Geronio Wilderness in the background. This is the most pristine part of the forest that is still subject to development.

CAJON PASS WILDLIFE LINKAGE

How do animals cross a six-lane freeway in the Cajon Pass to get from one mountain range to the other? Nearly all wildlife has to funnel through a narrow creek bed under the overpass bridge of the Interstate 15 Freeway, an area that was in private ownership until recently acquired by the Wildlands Conservancy.

Meanwhile, SBMLT is working to purchase wildlife open space parcels along Cajon Ridge, which are in unprotected private ownership. These lands funnel into the major wildlife linkage between the San Gabriel Mountains and the San Bernardino Mountains. Progress is underway for conservation acquisitions of three prominent parcels in this critical area.



The Deep Creek Watershed upstream of Running Springs, where over 700 acres out of 1,000 have so far been saved.

The ONYX SUMMIT AREA

The magnificent high country around Onyx Summit and Heart Bar backs up to the San Geronio Wilderness Area. This is one of the most wild and scenic parts of the San Bernardino National Forest.

However, there are many private inholdings susceptible to development that are left-over remnants of old 19th century ranches. Although some 2,000 acres have been purchased already for conservation, another 2,000 acres still need to be protected.

The San Bernardino Mountains Land Trust, the Wildlands Conservancy the U.S. Forest Service and the Pacific Crest Trail Association (among others) have made this pristine area a high priority for conservation protection. Given the wilderness character of this region, it is ideal for outdoor recreation. It is the heart of all the natural wildlife habitat throughout the forest.

SAN BERNARDINO MOUNTAINS LAND TRUST 2011 CALENDAR



Bear cub up a tree. Optimum protection of wildlife in the San Bernardino National Forest is best achieved by saving more habitat. Calendar photo by Frank Povero.

The colorful 2011 edition of the *San Bernardino Mountains Land Trust CALENDAR* is now available. Many outstanding scenes of our local National Forest are highlighted. These represent the winning pictures from the annual Land Trust photo contest.

Each year the photo contest produces excellent examples of the unique character of our exceptional local forest. Just about all the entries find a place in the calendar (in larger or smaller reproductions), with the twelve winners featured in large format for each month.

The Calendar provides a visually impressive reminder of how remarkable a place our local forest is in our highly urbanized Southern California region. We hope the Calendar also inspires appreciation for the vital work that the San Bernardino Mountains Land Trust performs in further protecting our unique National Forest.

PHOTO CONTEST

This year's first place award went to Lee Reeder, whose photo of arching autumn leaves against a blue sky is shown below. Lee lives in Crestline and is a freelance writer and photographer. Second place went to Frank Povero, who lives in Loma Linda and often visits Big Bear. A close-up of his winning photograph of a bear cub is featured to the left.

Other winning photographers include Sharon Beth and John Hummel, who live in Running Springs; Tricia and Tom Greer of Twin Peaks; and Joe Barthel, who resides in San Bernardino.

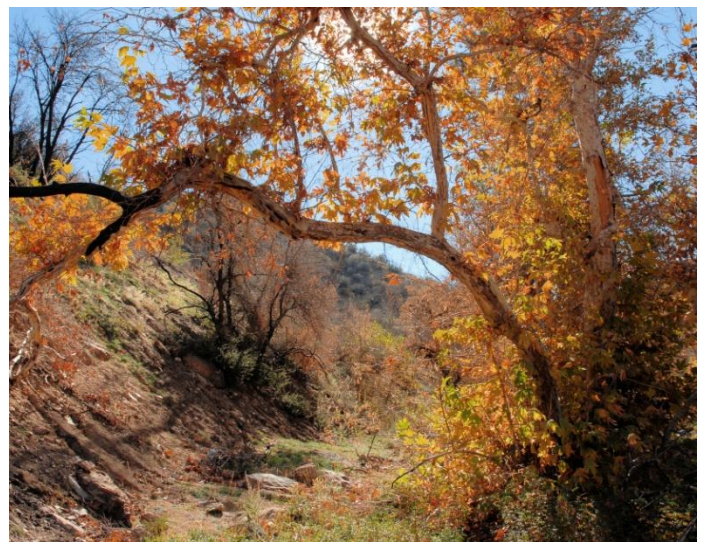


Prime specimen of unique snow plant. Photo by Sharon Beth.

These and other photographers make it a practice to submit their best photos each year.

Entry Guidelines

For those who'd like to enter the photo contest, the entry form and rules can be found on the Land Trust website at www.SBMLT.net. The prize for first place is \$350 and \$150 for second place. Entries for the 2012 Calendar must be submitted by the end of May.



Vivid autumn arch of an aging Sycamore tree featured in the SBMLT 2011 Calendar. Winning photo by Lee Reeder.

SBMLT PUBLIC OUTREACH

A general public meeting was held in June by the SAN BERNARDINO MOUNTAINS LAND TRUST at the Lake Arrowhead Fire Station. An update of recent activities and progress was provided in a power-point presentation.

Attendees asked questions and commented favorably on various projects. During much of 2009 the Land Trust was engaged in selling 800 acres (Eagle Canyon and Yaeger Mesa) to the U.S. Forest Service. An average escrow process with the Forest Service can sometimes take 12 months or more.

These sales helped replenish the revolving acquisition fund, enabling SBMLT to prepare for the next set of conservation purchases. Two properties on the Cajon Ridge have recently entered escrow.



SBMLT directors (Walter Ford, Arnie Bean and Valerie Wilson) join Kevin Kellems (Projects Manager) on a field trip to evaluate a prospective land acquisition site.

Photo contest winners were announced at the meeting, and images of the winning photographs were projected. All the photos are featured in the 2011 San Bernardino Mountains Calendar. (See three samples on the opposite page).

The Land Trust needs help in reaching out to potential members who might not know about the organization's existence or the valuable service it performs in greater forest protection.

Trudie and Carl Blank are examples of new members who attended the June meeting to hear about the Land Trust for the first time. They were impressed enough to join SBMLT on the spot. If you know of someone who hasn't yet heard of us, please help spread the word. The more help we have, the greater our success will be.



Trudie and Carl Blank attend SBMLT power-point update

TRAVELING POWER-POINT

SBMLT has an excellent power-point slide show about its many projects, its mission and accomplishments. If you belong to (or know of) an organization that would enjoy learning more about the Land Trust, we are happy to arrange a presentation. A general overview can be provided in timeframes of 15 - 45 minutes.

CONTACT:

Peter Jorris at (909) 867-3536

info@SBMLT.net –or–

POB 490, Lake Arrowhead, CA 92352

SBMLT was incorporated as a charitable nonprofit organization in 1996. We work closely with the U.S. Forest Service to purchase private inholdings in the local National Forest for conservation purposes.

SAN BERNARDINO MTNS LAND TRUST 2011 CALENDAR

ORDER FORM

Name _____

Address _____

City / State / Zip _____

Mail form with \$10 for each calendar + \$1.50 shipping to:

SBMLT, PO Box 490, Lake Arrowhead, Ca 92352

VOLUNTEERING

If you would like to help the Land Trust by volunteering in some special way, we can use assistance in general public outreach, calendar distribution, fundraising, recording secretary, publicity, helping out in the Blue Jay Thrift Shop or other unique talents you may have. We would be happy to hear from you. Use the contact information for SBMLT on page 2.



This dramatic scene of the Butler Peak Lookout Tower in the San Bernardino National Forest was photographed by Sharon Beth as a participant in the San Bernardino Mountains Land Trust's annual photo contest.

